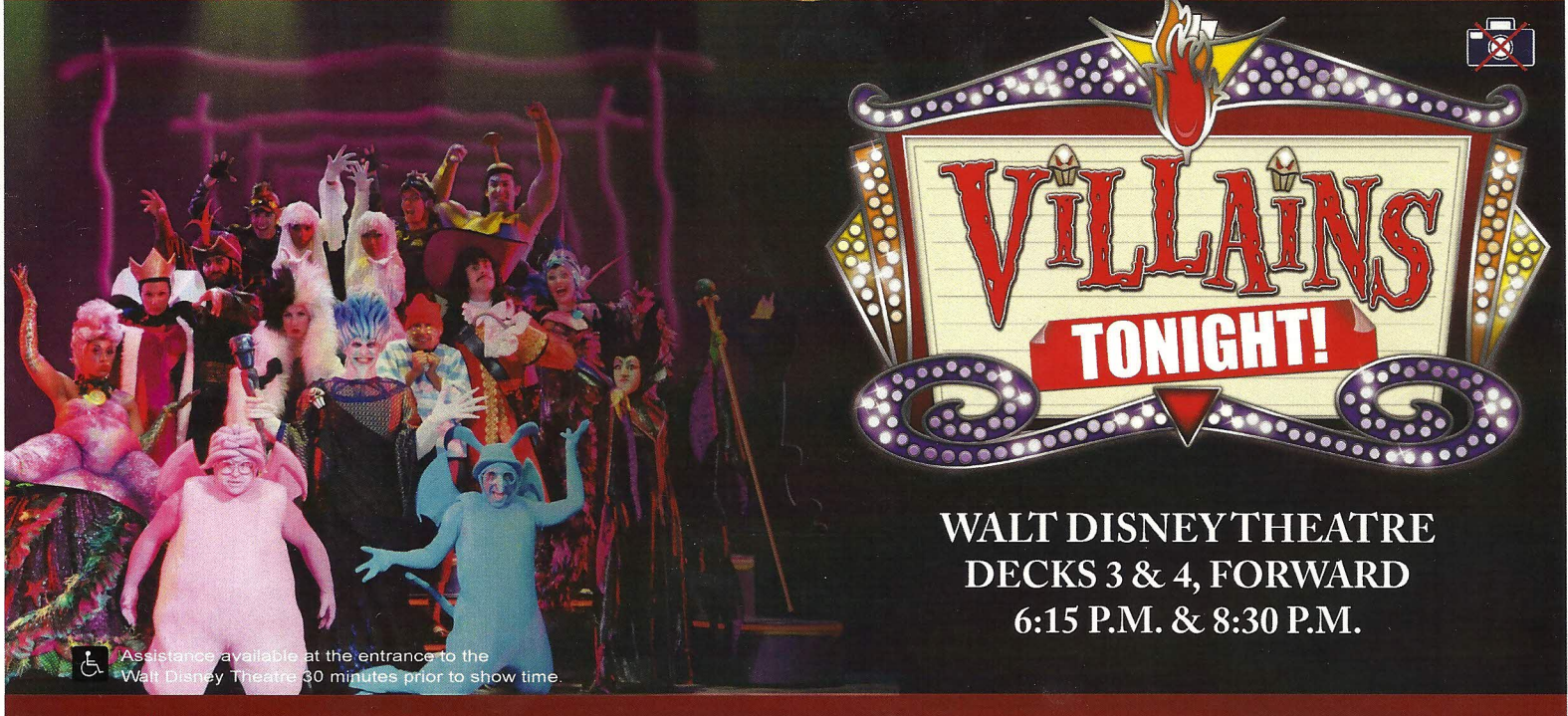



# PERSONAL NAVIGATOR

MONDAY, DECEMBER 3, 2012

Sunrise: 6:39 a.m. Sunset: 5:19 p.m.  
 Evening Attire: Optional Dress Up  
 All Ashore: 9:45 a.m.  
 All Aboard: 1:45 a.m.  
 Gangway: Deck 1, Midship, & Deck 1, Forward  
 Monday: Partly Sunny High: 75°F/24°C  
 Tuesday: Sunny High: 73°F/23°C

NASSAU




 Assistance available at the entrance to the Walt Disney Theatre 30 minutes prior to show time.

## Nassau Port Information

While you will find many great experiences in Nassau, there have been reports of increased crime, including assaults and robberies involving tourists in the area. As in any large city, you'll want to take some basic precautions to make the most of your time ashore.

- Be aware of your surroundings at all times, just as you would in your normal daily activities.
- Avoid short cuts, narrow alleys or poorly lit streets. We recommend that guests only visit the downtown shopping areas and other tourist locations.
- Leave valuables in your room safe and avoid carrying large amounts of cash. Exercise caution when using ATMs. Cameras and handbags should be carried out of sight and secured to your person with a strap.
- Leave passports, air transportation tickets and other travel documents in your room safe. When going ashore, each adult is required to carry a Driver's license, copy of passport or other government-issued photo ID.
- If traveling by taxi, use only licensed taxi operators.
- In general, use the same level of precaution you would use in any tourist destination.
- Most crimes are easier to commit in dark unlit areas. You should stay out of these types of areas and consider returning to the ship before nightfall. If you stay out at night, please be extra vigilant about your personal safety.



**GAME SHOW**

Bring the entire family and test your Disney knowledge in this interactive, family game show.

10:15 p.m.  
 D Lounge,  
 Deck 4, Midship

## Don't Miss:

### Making of the Dream

*Evolution, Deck 4, Aft - 11:30 a.m. (Families)*  
*Evolution (18+), Deck 4, Aft - 2:00 p.m. (Adults)*

Explore the origins of Disney Cruise Line - and the latest and greatest innovations conjured especially for the Disney Dream, in this fascinating and entertaining behind-the-scenes program.

### Disney Animation: Creating a Character

*D Lounge, Deck 4, Midship - 2:00 p.m.*

Go behind the scenes at Walt Disney Animation Studios and learn the principles that make animation work, and try your hand at creating your own easy animation demonstration in this fun and fascinating enrichment program.

### Dream Quest

*Evolution (18+), Deck 4, Aft - 10:00 p.m.*

Enjoy the adult version of the wildest and wackiest scavenger team event on the seven seas!

### Club New Year's Eve

*D Lounge, Deck 4, Midship - 10:45 p.m.*

"The party don't start till you walk in" - to Club New Year's Eve! Bring your family and help us count down to a brand new year!



Welcome to Nassau, capital of the Bahamas. It is not too late to book an amazing adventure to Blue Lagoon Island, Atlantis, or you could book a snorkeling adventure.

All Port Adventures meet onboard the ship in Nassau. Please check your tour tickets for meeting times and locations.

## DINNER MENU

Animator's Palate: Pacific Rim Cuisine  
 Enchanted Garden: Continental Market  
 Royal Palace: French Dinner

## DRINK OF THE DAY

Yellow Bird (Alcoholic)  
 Parrot Song (Non Alcoholic)

## IMPORTANT NUMBERS

Fire/Security: 7-3001  
 Medical Emergency: 7-3000  
 Health Center: 7-1923



# FAMILY ACTIVITY HIGHLIGHTS

## FAMILY CRAFTS

*D Lounge, Deck 4, Midship - 1:15 p.m.*

Create a fun souvenir with your Cruise Staff that is yours to keep.

## DISNEY VACATION CLUB® GROUP PRESENTATION

*Evolution, Deck 4, Aft - 3:00 p.m.*

Want to learn more about taking magical vacations year after year? Stop by our interactive group presentation to find out more information from a Disney Vacation Club representative.

## HOLIDAY TRADITIONS STORYTELLING

*Lobby Atrium, Deck 3, Midship - 4:00 p.m.*

Join us for some classic Yule Tide tales in the holly-decorated heart of the Disney Dream - the Lobby Atrium.

## MIRROR, MIRROR

*D Lounge, Deck 4, Midship - 5:30 p.m.*

Join the Magic Mirror and Dopey in the fairest game show of them all, Mirror, Mirror. There's trivia, singing and even a relay race. Hi Ho, Hi Ho, its off to play we go!

## DISNEY DISCO

*D Lounge, Deck 4, Midship - 6:00 p.m.*

Join your Cruise Staff and dance along to some of your favorite tunes.

## FAMILY DREAM QUEST

*Evolution, Deck 4, Aft - 7:30 p.m.*

Enjoy the wildest and wackiest scavenger team event on the seven seas!

## FAMILY SUPERSTAR KARAOKE

*D Lounge, Deck 4, Midship - 9:30 & 11:15 p.m.*

Calling all singing superstars! Join your Cruise Staff in D Lounge and sing along to your favorite song - fun for everyone.



# ADULT ACTIVITY HIGHLIGHTS

## SENSES SPA SEMINARS

*Body Sculpt Boot Camp (Fee Applies) - Goofy's Sports Deck, 7:30 a.m.*

*Wake Up & Stretch Class - Senses Fitness Center, 8:00 a.m.*

*Group Cycling (Sign-Up Required) - Senses Fitness Center, 8:30 a.m.*

*Seminar: Burn Fat Faster - Senses Spa & Salon, 9:30 a.m.*

*Good Feet Seminar: Relieving Back Pain - Senses Fitness Center, 3:00 p.m.*

*Seminar: Acupuncture: A Life Changing Experience - Senses Spa & Salon, 4:00 p.m.*

*Pathway to Yoga - Senses Fitness Center, 4:30 p.m.*



## TASTING SEMINARS

*Mixology - Skyline, 4:00 p.m.*

*Martini Tasting - Meridian, 4:00 p.m.*

Please make reservations for tastings at Guest Services for a nominal fee.

Tasting Seminars are only for Guests 21 and older.

CLUB  
18\*21

## MINI GOLF CHALLENGE

*Goofy's Sports Deck, Deck 13, Aft, 5:00 p.m.*

## MIXER

*Evolution, Deck 4, Aft, 10:00 p.m.*

## ART OF THE THEME SHOW TOUR

*Meet at Meridian, Deck 12, Aft - 2:45 p.m.*

A walking tour that highlights the ship's design, emphasizing Disney culture, theming and artistry.



## ESPN MONDAY NIGHT FOOTBALL CALL IT!

*687 Pub, Deck 4, Aft - 5:00 p.m.*

Test your Monday Night Football knowledge as you watch some of the greatest highlights of football history and then "make the call" as to what happens next!



## 8TRAX (70'S REMIX)

FOLLOWED BY GUEST DJ CHRISTIAN GAMA

*Evolution, Deck 4, Aft - 11:15 p.m.*

Join your Cruise Staff for a 70's disco fever epidemic. With a special appearance by the Evolution Dancers.

## \$5,000 MEGA JACKPOT BINGO

**D Lounge,  
Deck 4, Midship  
Card Sales - 4:00 p.m.**

**Game Starts - 4:15 p.m.**

Join your Cruise Staff for four cash prize games. Cover your card in 46 numbers or less, and \$5,000 could be yours. If not, we continue to play for the highest cash prize of the session!

## SENSES SPA BINGO

**D Lounge, Deck 4, Midship**

**Card Sales - 7:15 p.m.**

**Game Starts - 7:30 p.m.**

Four cash prizes up for grabs, plus great spa prizes to be won, including facials and massages courtesy of the Senses Spa & Salon. Also, the snowball jackpot continues to grow and could be won today!

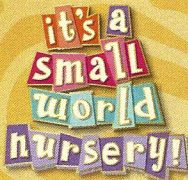




# YOUTH ACTIVITIES HIGHLIGHTS

## DINE & PLAY

A convenience for families dining at 8:15 p.m., our Youth Activities Counselors will be available at 9:15 p.m. at the entrance of Royal Palace, Enchanted Garden and Animator's Palate dining rooms to bring registered children to join the fun in the Youth Activity areas.



**Deck 5, Midship (7-5864)** 9:00 a.m. - 1:00 a.m.

## OPEN HOUSE

8:00 - 9:00 a.m.

Your chance to see our toddler space, It's A Small World Nursery.



**Deck 5, Midship (7-1440)** 11:00 a.m. - 12:00 Mid  
(3 - 12 years old)

## BIG TOP FUN FEST

11:30 a.m.

It's the greatest show on Earth. Come re-discover the circus Disney style with clowns, jugglers and classic Disney cartoons.

## TOY STORY BOOT CAMP

6:15 p.m.

Ten-hut! The Green Army Men are holding a boot camp and your junior cruiser is invited to join in on the fun.



**Deck 5, Midship (7-1445)** 9:00 a.m. - 1:00 a.m.  
(3 - 12 years old)

## PISTON CUP CHALLENGE

11:15 a.m.

It's Dinoco time and you're part of the pit crew! Design your own race car and see if you've got what it takes to end up in the Winner's Circle!

## SUPER SLOPPY SCIENCE

8:30 p.m.

Join Professor Make-O-Mess in some of the most extreme experiments you will ever see in the world of Super Sloppy Science!



**Deck 13, Midship (7-9743)** 10:00 a.m. - 1:00 a.m.  
(11 - 14 years old)

## ANIMATION

3:00 p.m.

Learn simple animation techniques and then put your new skills to use by drawing some of your favorite Disney characters.

## ANYONE CAN COOK

7:30 p.m.

Create a delicious dish together. Fun for everyone!



**Entrance on Deck 4, Forward (7-9417)**  
11:00 a.m. - 2:00 a.m.  
(14 - 17 years old)

## SUPER SLOPPY SCIENCE

5:45 p.m.

Join Professor Make-O-Mess in some of the most extreme experiments you will ever see in the world of Super Sloppy Science!

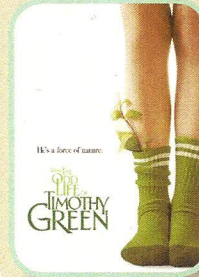
## GHOST VOYAGERS

11:30 p.m.

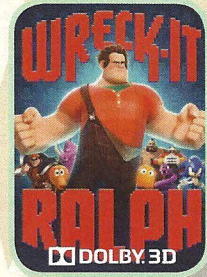
The ship has come upon some mysterious waters and strange things are afoot. Join a paranormal expert to help investigate the area and track down any evidence of ghostly beings on the ship.

# BUENA VISTA THEATRE

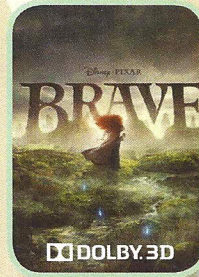
## Today's Movies



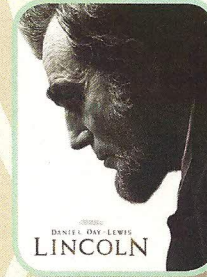
12:30 p.m.  
Run Time: 1 hr 49 min  
Rating: PG



3:00 p.m.  
Run Time: 1 hr 51 min  
Rating: PG



5:30 & 8:15 p.m.  
Run Time: 1 hr 45 min  
Rating: PG



10:30 p.m.  
Run Time: 2 hr 32 min  
Rating: PG-13



"The party don't start till you walk in" -  
to Club New Year's Eve!  
Bring your family and help us count down to a brand new year!

**D Lounge,  
Deck 4, Midship  
10:45 p.m.**



## GAME SHOW

It's time to play everyone's favorite couples game show - Match Your Mate!

**Evolution (18+),  
Deck 4, Aft  
10:30 p.m.**

## YOUTH ACTIVITIES OPEN HOUSE

Open House is an opportunity for all to come and participate in a variety of exciting activities and free time in the Oceaneer Club, Lab, Edge and Vibe throughout the cruise. During these times secured programming will still be offered in the other venue for those looking to check their children into care.



# MORE TO ENJOY WHILE ONBOARD



## BOOK YOUR NEXT CRUISE TODAY AND SAVE

Don't waste time, book your next cruise today. You'll save 10%, receive up to a \$200 onboard credit, and pay a reduced deposit! Tune to Channel 8 on your stateroom TV for details and visit the Future Cruise Sales Desk, Deck 4, Midship.



## DISNEY VACATION CLUB® GROUP PREVIEW

Want to learn more about taking magical vacations year after year? Please see a Disney Vacation Club representative on Deck 4, Midship, or call 7-2805 from your stateroom phone for more information about our interactive group presentation.

## DIAMONDS FOR BREAKFAST - NASSAU SHOPPING

8:00 a.m. to 10:00 a.m. Shopping Desk, Deck 4, Midship. This is your last chance to see Summer and Vlad! Make sure you collect your FREE Savings Ashore Kit and VIP Cards before going ashore. Summer and Vlad are also your onboard diamond & gemstone specialists and are here to ensure you are well taken care of in Nassau and get the highest quality merchandise and best deals possible.




**SENSES**  
SPA & SALON

### PAMPER PACKAGE

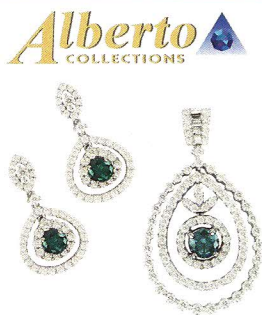
50 minute full body Swedish massage, foot and ankle massage, Indian scalp massage and 25 minute facial.  
75 minute pamper for \$149.  
In Port Special pricing: Receive \$30 off all signature spa services, book and received today!

**Senses Spa, Deck 11, Forward, Ext 7-1465.**

**ALBERTO COLLECTIONS PRESENTS:**

Sparkling and Colored Diamonds  
Blue Diamonds are the most valuable diamonds by carat weight on the planet and they represent less than 2% of all the diamonds found in the world. Approximately 98% of the chocolate diamonds come from Western Australia making these some of the rarest diamonds on the planet.

**WHITE CAPS**  
Deck 3, Forward



**Shutters** **PROFESSIONAL PORTRAITS TONIGHT!**

Lifestyle – Six Guests maximum  
Donald Statue – Groups accommodated

**5:15 p.m. - 6:00 p.m.**  
**7:15 p.m. - 8:30 p.m.**  
**9:30 p.m. - 10:30 p.m.**

*\*Please note that photos are available for viewing on our interactive photo kiosks approximately five hours after being taken and are only available for purchase during this cruise.*

## ONBOARD AIRLINE CHECK IN

If you would like to have your boarding passes printed for you onboard and have your luggage taken to the airport for you, today at 8:00 p.m. is the last chance to enroll. If you have Disney Cruise Line airport transfer to Orlando International Airport and fly with one of the participating airlines. Please stop at Guest Services Desk, Deck 3, Midship.

## FINE DINING RESERVATIONS

Treat yourself to the ultimate culinary experience at sea. At Remy and Palo the enchantment of sea meets with elegance for a once-in-a-lifetime dining experience. Service/Cover charges will apply, please call 7-9734 for reservations to secure the last available spots.

## SURF @ SEA

\$0.75 per minute, or save money by buying blocks of time. \$27.50 for 50 minutes, \$40 for 100 minutes and \$75 for 250 minutes. Wireless information sheets are available at Guest Services, Deck 3, Midship. Please note: Due to satellite connectivity, onboard internet service will be noticeably slower than you may be accustomed to and may at times be interrupted or unavailable.

## Disney CRUISE LINE. PORT ADVENTURES

Welcome to Nassau, capital of the Bahamas. It is not too late to book an amazing adventure to Blue Lagoon Island, Atlantis, or you could book a snorkeling adventure. And don't forget, we will be arriving to Disney's Castaway Cay tomorrow, so plan ahead to ensure your first choice of adventure is available. Also, ask our team about the exclusive Getaway Packages, available onboard only.

All Port Adventures meet onboard the ship in Nassau. Please check your tour tickets for meeting times and locations.

## SHOPPING

Due to Port Regulations, shops are unable to open when the ship is in port. Shops will be closed all day today, and regular operating hours will resume tomorrow (Tuesday) at 5:30 p.m.

We apologize for any inconvenience.

## HAVE YOU SEEN MAUI JIM?

See the world the way it was meant to be seen with Maui Jim's polarized, two lens technology eyewear which provides unmatched protection and comfort. White Caps, Deck 3, Forward.

## TAG HEUER TIMEPIECES

Over 150 years of excellence in keeping time, proudly worn all over the world, and available here on the Disney Dream. White Caps, Deck 3, Forward.

## NIKE APPAREL DEAL

Golfers, it's time to 'Tee-Up!' Polos, shorts, and caps available. Buy one piece of any Nike apparel and get another Nike piece 20% off. You are sure to hit a hole-in-one with this amazing offer! Sea Treasures, Deck 3, Forward.

## A PICTURE PAINTS A THOUSAND WORDS

Re-live your cruise experience for years to come with a piece of exclusive Disney Cruise Line art. The gallery is your home to art by famous Disney artists like Thomas Kinkade and Britto. Celebrate Holidays with our newly arrived Mickey Santa figurine. Discounted shipping available on two or more pieces of art. Vista Gallery, Deck 4, Midship.

## TAX AND DUTY FREE

Tax and duty free shopping right here onboard! The best brands in everything you desire. Fossil watches, Effy jewelry, Chanel fragrances, and more. Buy onboard and we will package it safely for your journey home. White Caps, Deck 3, Forward.

Due to port regulations, when the ship is docked, the stores will remain closed.

DD 181 12-02-2012 ©DISNEY

## IMPORTANT INFORMATION

**Security Notice**  
All Guests (including children) who wish to disembark the ship are required to present their Key to the World card at the gangway. A photo ID is also required for those Guests who are 18 years of age or older. Guests under the age of 18 are required to have a Parent, Guardian or other responsible adult sign an authorization form at the time it is given out if they wish to go ashore unaccompanied. Authorization forms are available at the gangways and Guest Services.

**Cold and Flu Reminder**  
Please wash hands frequently and thoroughly, particularly before meals. Contact the Health Center by dialing 7-1923, should anyone in your party become ill.

**Corridor Quiet Hours**  
As a courtesy to all our Guests, please recognize quiet hallway hours from 10:00 p.m. til 8:00 a.m.

**Inclement Weather**  
For the safety of all Guests, outdoor events may be changed due to unforeseen weather conditions.

**Environmental Message**  
With Disney's commitment to the Environment, please refrain from throwing anything over the Ship's side. Thank you!

**No Reserved Seats Policy**  
As a courtesy to all our Guests, we kindly advise that the saving of seats is not permitted in the Walt Disney Theatre, and the saving of the sun loungers is not permitted on Deck 11, 12 and 13. Items left unattended will be returned to host and found at Guest Services, Deck 3 Midship.

**Smoking**  
For the comfort of our guests the following areas are designated as Smoking areas:  
• Deck 13, Forward, port side, by "Currents"  
• Deck 12, Aft, port side outdoor area that is accessible through the Meridian Lounge  
• Deck 4, Aft, port side from 6:00 p.m. to 6:00 a.m. only (all of Deck 4 is no smoking from 6:00 a.m. to 6:00 p.m.)  
• Smoking is permitted on stateroom verandahs. Smoking is prohibited inside all guest staterooms. Guests found smoking in their staterooms will be charged a \$250 stateroom recovery fee.

**Walt Disney Theatre**  
Theatrical performances may use artificial fog, strobe lights, pyrotechnics and other special effects. For the safety of our performers and the comfort of those around you, the use of any photography, video recording devices or any electronic equipment is prohibited.

**Verandah Safety**  
Please do not leave any combustible materials on your balcony when not present in your stateroom for safety reasons.

DD/CL/4D/181/12.02.2012/MJM/©DISNEY



Morning	8:30	8:45	9:00	9:15	9:30	9:45	10:00	10:15	10:30	10:45	11:00	11:15	11:30	11:45	12:00	12:15	12:30	12:45	1:00	1:15	1:30
FUNNEL VISION	Pixar Shorts (G) Funnel Vision			Snow White (G) Funnel Vision			Virtual Tours Funnel Vision			The Emperor's New Groove (G) Funnel Vision			The Lion King (G) Funnel Vision >2:30 p.m.								
MOVIES	The Odd Life of Timothy Green (PG)  Buena Vista Theatre > 2:19 p.m.																				
CHARACTER	Princess Gathering Lobby Atrium			Tinker Bell Lobby Atrium			Minnie Dk4, Balcony			Daisy Dk4, Balcony			Minnie Dk4, Balcony			Donald Dk 4, Balcony					
FUN FOR ALL AGES	Last Minute Shopping Advice With Summer & Vlad Shopping Desk, Deck 4, Midship						Making of the Dream Evolution						Disney Cruise Line Trivia 687			Family Crafts D Lounge					
ADULTS	Friends of Bill W. Outlook			Burn Fat Faster Senses Spa & Salon			Group Cycling Sense Fitness Center			Sports Trivia 687											
VIBE	Youth Activities Open House						Hangin' in Vibe														
EDGE	Youth Activities Open House						Gender Wars														
OCEANEER LAB	Animation Antics						Piston Cup			Lunch											
OCEANEER CLUB	Youth Activities Open House "Puzzle Playtime" 9:30 a.m. - 10:00 a.m.						Youth Activities Open House "Adventures to Neverland" 10:30 a.m. - 11:00 a.m.			Memory Wall			Big Top Fun Fest			Lunch			Magic Playfloor		

Afternoon	1:45	2:00	2:15	2:30	2:45	3:00	3:15	3:30	3:45	4:00	4:15	4:30	4:45	5:00	5:15	5:30	5:45	6:00	6:15	6:30	6:45
FUNNEL VISION	Classic Cartoons (G) Funnel Vision			The Mistle Tones (G) Funnel Vision			Hercules (G) Funnel Vision														
MOVIES	MOVIE SPECIAL:  BUENA VISTA THEATRE  RATED: PG > 7:15 p.m.																				
CHARACTER	Mickey Dk 4, Balcony			Santa Claus Lobby Atrium			Mickey Mouse Deck 4, Balcony			Belle Lobby Atrium			Donald Preludes								
FUN FOR ALL AGES	Disney Animation: Creating A Character D Lounge			Disney Vacation Club Presentation Evolution			Bingo Pre Sales			\$5,000 MEGA Jackpot D Lounge			Disney's Mirror Mirror D Lounge			VILLAINS TONIGHT Walt Disney Theatre					
ADULTS	Making of the Dream Evolution			Art of The Theme Show Tour Meet at Meridian			Good Feet Seminar Senses Salon & Spa			Live Guitar Quiet Cove			Acupuncture Seminar Senses Salon & Spa			ESPN MNF Call It! 687 Pub					
VIBE	Animation						Sports Deck						Super Sloppy Science			Open House					
EDGE	Animation						Sports Deck														
OCEANEER LAB	Get the Hook			Magic Playfloor			Youth Activities Open House "Super Sloppy Science" 4:00 p.m. - 4:45 p.m.						Mirror, Mirror D Lounge			Dinner			Anyone Can Cook		
OCEANEER CLUB	Aloha Luau			Cruisin' with Crush			Holiday Storytelling Lobby Atrium			Once Upon a Time			Dinner			Toy Story Boot Camp					

Evening	7:00	7:15	7:30	7:45	8:00	8:15	8:30	8:45	9:00	9:15	9:30	9:45	10:00	10:15	10:30	10:45	11:00	11:15	11:30	11:45	12:00
FUNNEL VISION	101 Dalmations (G) Funnel Vision			NFL: NY Giants vs. Washington Redskins Funnel Vision (Subject to satellite availability and blackouts)																	
MOVIES	MOVIE SPECIAL:  BUENA VISTA THEATRE  RATED: PG-13 > 1:02 a.m.																				
CHARACTER	Tiana Atrium			Daisy Preludes			Mickey Dk 4, Balcony			Goofy Dk4, Balcony			Mickey Mouse Deck 4, Balcony			Ariel Atrium					
FUN FOR ALL AGES	Bingo Pre Sales			Senses Spa BINGO D Lounge			VILLAINS TONIGHT Walt Disney Theatre			The Dreamers LIVE Lobby Atrium - Live Music			Family Fusion D Lounge			WALT DISNEY THEATRE Doors open at 10:15 p.m. > 12:21 a.m.			Family Superstar Karaoke D Lounge		
ADULTS	Name That 70's Tune 687 Pub			NFL: NY Giants vs. Washington Redskins 687 Pub (Subject to satellite availability and blackouts)			Dream Quest Evolution			Match Your Mate Evolution - Game Show			8 Trax feat. the Evolution Dancers Evolution								
VIBE	Open House			Teen AquaDuck			Pump It Up			That's Hilarious!			Ghost Voyagers								
EDGE	Anyone Can Cook			Tween AquaDuck			That's Hilarious!														
OCEANEER LAB	Magic Show			Super Sloppy Science			POTC: Tides of Fortune			Magic Playfloor											
OCEANEER CLUB	Little Einsteins			Magic Playfloor			Camp Rocking Out			Movie Time											

Symbol for activities that will be repeated during the cruise

FOLD

Fold along the dotted lines and take me with you so you don't miss any of the fun!

FOLD

IN THE SPOTLIGHT SERIES

SOLVE IT! SERIES

JUMP UP! SERIES

CREATE & INVENT SERIES

OPEN HOUSE

CLUBHOUSE SERIES

STORYBOOK SERIES



MONDAY, DECEMBER 3, 2012 - NASSAU, BAHAMAS

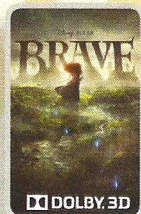
# BUENA VISTA THEATRE



12:30 p.m.  
Run Time:  
1 hr 49 min  
Rating: PG



3:00 p.m.  
Run Time:  
1 hr 51 min  
Rating: PG



5:30 & 8:15 p.m.  
Run Time:  
1 hr 45 min  
Rating: PG



10:30 p.m.  
Run Time:  
2 hr 32 min  
Rating: PG-13

## Character Appearances

### PRINCESS GATHERING

Lobby Atrium  
9:00 a.m.

### MINNIE MOUSE

Deck 4, Balcony  
9:15 a.m. & 10:15 a.m.  
Lobby Atrium - 5:15 p.m.,  
7:15 p.m. & 9:45 p.m.

### TINKER BELL

Lobby Atrium - 9:30 a.m.

### DAISY DUCK

Deck 4, Balcony - 9:45 a.m.  
Preludes  
5:15 p.m. & 7:30 p.m.

### DONALD DUCK

Deck 4, Balcony - 1:00 p.m.,  
Preludes - 5:45 p.m.  
8:00 p.m. & 9:45 p.m.

### DISNEY FRIENDS

Lobby Atrium - 2:15 p.m.

### SANTA CLAUS

Lobby Atrium - 3:15 p.m.

### MICKEY MOUSE

Deck 4, Balcony  
2:15 p.m., 5:00 p.m.,  
7:15 p.m. & 9:45 p.m.

### BELLE

Lobby Atrium - 5:15 p.m.

### CINDERELLA

Lobby Atrium - 8:15 p.m.

### PRINCESS AURORA

Lobby Atrium - 7:45 p.m.

### PRINCESS TIANA

Lobby Atrium - 7:15 p.m.

### GOOFY

Deck 4, Balcony - 8:15 p.m.

### SNOW WHITE

Lobby Atrium - 9:45 p.m.

### ARIEL

Lobby Atrium - 10:15 p.m.



For details of daily Disney character appearances, refer to the character line in your Navigator Grid or the digital character board in the Lobby Atrium.

## YOUTH ACTIVITIES THEMED EXPERIENCES

**CLUBHOUSE SERIES**  
focuses on movement and features content which appeals to younger children.

**STORYBOOK SERIES**  
is designed with a strong connection to the Disney classic stories.

**JUMP UPI SERIES**  
includes large ground games & movement-oriented activities.

**CREATE & INVENT SERIES**  
will have a tactile focus allowing children to create and admire their work.

**IN THE SPOTLIGHT SERIES**  
focuses on children's stage presence with lots of activities and enthusiasm.

**SOLVE IT! SERIES**  
are less active, but will challenge children with problem/solutions based activities.

### OPEN HOUSE

activities for families, adults and children of all ages to enjoy together.

## SHIP DIRECTORY

### YOUTH ACTIVITIES

DISNEY'S OCEANEER CLUB	DECK 5, MID	11:00 A.M. - 12:00 MID.
DISNEY'S OCEANEER LAB	DECK 5, MID	9:00 A.M. - 1:00 A.M.
EDGE	DECK 13, MID	10:00 A.M. - 1:00 A.M.
VIBE	DECK 4, FWD	11:00 A.M. - 2:00 A.M.
IT'S A SMALL WORLD NURSERY	DECK 5, MID	9:00 A.M. - 1:00 A.M.

### RECREATION

AQUADUCK	DECK 12, MID	9:00 A.M. - 11:00 P.M.
DONALD'S POOL	DECK 11, MID	6:00 A.M. - 12:00 MID.
GOLF/SPORTS SIMULATORS	DECK 13, AFT	11:00 A.M. - 6:00 P.M.
GOOFY & MAX'S MINI GOLF	DECK 13, AFT	8:00 A.M. - 10:00 P.M.
GOOFY'S SPORTS DECK	DECK 13, AFT	12:00 A.M. - 6:00 P.M.
MICKEY'S POOL	DECK 11, MID	6:00 A.M. - 12:00 MID.
MICKEY'S SLIDE	DECK 11, MID	9:00 A.M. - 6:00 P.M.
MIDSHIP DETECTIVE AGENCY	DECK 5, MID	8:00 A.M. - 11:00 P.M.
NEMO'S REEF	DECK 11, MID	9:00 A.M. - 6:00 P.M.
PORT ADVENTURES DESK	DECK 5, MID	8:00 A.M. - 11:00 A.M. 6:00 P.M. - 8:30 P.M.
QUIET COVE POOL	DECK 11, FWD	6:00 A.M. - 12:00 MID.
SENSES FITNESS CENTER	DECK 11, FWD	6:00 A.M. - 10:00 P.M.

### GENERAL INFORMATION

ARR-CADE	DECK 11, AFT	24 HOURS
DISNEY VACATION CLUB	DECK 4, MID	9:00 A.M. - 11:00 A.M. 5:30 P.M. - 10:00 P.M.
FUTURE CRUISE SALES DESK	DECK 4, MID	8:00 A.M. - 10:00 A.M. 3:00 P.M. - 10:00 P.M.
GUEST SERVICES	DECK 3, MID	24 HOURS
MEDICAL HEALTH CENTER	DECK 1, FWD	9:30 A.M. - 11:00 A.M. 4:30 P.M. - 7:00 P.M.
PORT & SHOPPING DESK	DECK 4, MID	8:00 A.M. - 9:00 A.M.
PRELUDES	DECK 3, FWD	5:45 P.M. - 6:30 P.M. 8:00 P.M. - 8:45 P.M.
SENSES SPA AND SALON	DECK 11, FWD	8:00 A.M. - 10:00 P.M.
SHUTTERS PHOTO GALLERY	DECK 4, MID	5:00 P.M. - 11:00 P.M.

### SHOPPING

**DUE TO PORT REGULATIONS, SHOPS ARE UNABLE TO OPEN WHEN THE SHIP IS IN PORT. SHOPS WILL BE CLOSED ALL DAY TODAY, AND REGULAR OPERATING HOURS WILL RESUME ON TUESDAY. WE APOLOGIZE FOR ANY INCONVENIENCE.**

All Ashore: Approx. 9:45 a.m.  
All Aboard: 1:45 a.m.

### SHIP'S AGENT IN NASSAU

Nassau, Bahamas  
R.H. Curry & Company, 303 Shirley St.,  
P.O. Box N8168 Nassau, Bahamas  
242-323-8425 or 242-357-9218

### IMPORTANT NUMBERS

Fire/Security: 7-3001  
Medical Emergency: 7-3000  
Health Center: 7-1923

### DINNER MENU

Animator's Palate: Pacific Rim Cuisine  
Enchanted Garden: Continental Market  
Royal Palace: French Dinner  
Dining Times: 5:45 p.m. & 8:15 p.m.

### DRINK OF THE DAY

Yellow Bird (Alcoholic)  
Parrot Song (Non Alcoholic)

### WEATHER FORECAST

Monday: Partly Sunny  
High: 75°F/24°C  
Tuesday: Sunny  
High: 73°F/23°C

Evening Attire: Optional Dress Up

## DINING & LOUNGES

### BREAKFAST

CABANAS CONTINENTAL	DECK 11, AFT	7:00 A.M. - 7:30 A.M.
CABANAS	DECK 11, AFT	7:30 A.M. - 10:30 A.M.
ENCHANTED GARDEN	DECK 2, MID	8:00 A.M. - 10:00 A.M.
ROYAL PALACE	DECK 3, MID	8:00 A.M. - 9:30 A.M.

### LUNCH

CABANAS	DECK 11, AFT	12:00 P.M. - 2:00 P.M.
PIZZERIA AT CABANAS	DECK 11, AFT	2:00 P.M. - 4:00 P.M.
FILLMORE'S FAVORITES	DECK 11, MID	11:00 A.M. - 6:00 P.M.
LUIGI'S PIZZA	DECK 11, MID	11:00 A.M. - 6:00 P.M.
ROYAL PALACE	DECK 3, MID	12:00 P.M. - 1:30 P.M.
TOW MATER'S GRILL	DECK 11, MID	11:00 A.M. - 6:00 P.M.

### DINNER

ANIMATOR'S PALATE	DECK 3, AFT	5:45 P.M. & 8:15 P.M.
ENCHANTED GARDEN	DECK 2, MID	5:45 P.M. & 8:15 P.M.
ROYAL PALACE	DECK 3, MID	5:45 P.M. & 8:15 P.M.
CABANAS TABLE SERVICE	DECK 11, AFT	6:30 P.M. - 9:30 P.M.
TOW MATER'S GRILL	DECK 11, MID	6:00 P.M. - 11:00 P.M.
PALO & REMY (18+)	DECK 12, AFT	6:00 P.M. - 9:00 P.M.

(RESERVATION REQUIRED & COVER CHARGE APPLICABLE, DIAL #7-9734)

### LATE NIGHT (SNACKS)

LUIGI'S PIZZA	DECK 11, MID	9:30 P.M. - 12:30 A.M.
THE DISTRICT	DECK 4, AFT	10:45 P.M. - 11:45 P.M.

### ADDED FEATURES

BEVERAGE STATION	DECK 11, AFT	24 HOURS
EYE SCREAM	DECK 11, MID	11:00 A.M. - 12:30 A.M.
ROOM SERVICE	DIAL 0	24 HOURS

### ENTERTAINMENT - LOUNGES - BARS

Adults must be 21 and older to consume alcoholic beverages.

687 PUB	DECK 4, AFT	5:00 P.M. - 9:00 P.M.
687 PUB (18+)	DECK 4, AFT	9:00 P.M. - 12:30 A.M.
BON VOYAGE	DECK 3, MID	9:00 A.M. - 11:00 P.M.
COVE BAR (18+)	DECK 11, FWD	10:30 A.M. - 11:00 P.M.
COVE CAFE (18+)	DECK 11, FWD	7:00 A.M. - 12:00 MID.
CURRENTS (18+)	DECK 13, FWD	11:00 A.M. - 12:00 MID.
D LOUNGE	DECK 4, MID	SHOWTIMES
DISTRICT LOUNGE	DECK 4, AFT	4:00 P.M. - 9:00 P.M.
DISTRICT LOUNGE (18+)	DECK 4, AFT	9:00 P.M. - 12:00 MID.
EVOLUTION (18+)	DECK 4, AFT	9:30 P.M. - 2:00 A.M.
FROZONE TREATS	DECK 11, MID	11:00 A.M. - 11:00 P.M.
MERIDIAN (18+)	DECK 12, AFT	5:00 P.M. - 12:30 A.M.
PINK (18+)	DECK 4, AFT	5:00 P.M. - 12:30 A.M.
OUTLOOK	DECK 14, MID	SUNSET TIME
SKYLINE (18+)	DECK 4, AFT	5:00 P.M. - 12:30 A.M.
VISTA CAFE	DECK 4, MID	7:30 A.M. - 11:00 P.M.
WAVES	DECK 12, AFT	12:00 P.M. - 7:00 P.M.

Consumers who order raw or partially cooked, ready-to-eat food of animal origin, are hereby informed that the food is not sufficiently cooked to ensure its safety.



**IMPORTANT INFORMATION**  
Please check your Port Adventure tour tickets for meeting times and locations. Visit the Port Adventures Deck 5, Midship, for any questions.